

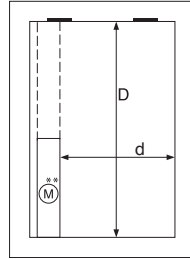


TECHNICAL FILE

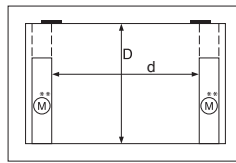
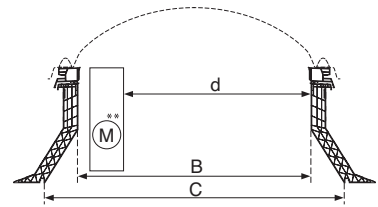
Skylux[®]

Electric roof access skylight

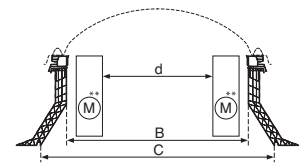

Hello daylight!



ENKELE MOTOR



DUBBELE MOTOR



General product description

The pre-assembled Skylux® roof access skylight provides access to the roof or the rooftop terrace. The electric roof access skylight is a complete unit consisting of a standard PVC frame with one or two actuators and a Skylux® curb of your choice in PVC 30/20 or 16/20 or in metal M30. A Skylux® dome of your choice must be added (not suitable for glass domes and hybrid domes).

The actuator is mounted sideways in the curb, which allows a maximum roof access opening.

Larger skylights are equipped with 2 actuators. The opening angle of the actuator is steplessly regulable to 90°. The skylight is suitable for roof access and for ventilation.

To facilitate the mounting on site, a pre-assembled quick assembly system is foreseen. This is a pre-assembled entity, which consists of a curb and a PVC frame, one or two actuators completely pre-assembled at the manufacturers plant.

Executions

- The electric roof access is completely pre-assembled and consists of:
- A curb of your choice: a pvc 30820 or 16/00 curb or a metal M30 curb
 - A standard pvc frame
 - A Skylux® actuator with opening angle 90° (single ▲ or double ▲▲)
 - Transformer 230 V - 24 VDC 5 A
 - A remote with holder

Combined to

A Skylux® skylight of your choice (no flat glass or hybrid skylight). We recommend to combine the electric roof access with a shock resistant polycarbonate skylight with fall-through protection of a heatstop skylight.

**** position of the actuator is standard and is indicated on the drawing.**

Specific characteristics of the actuator

Pressure.....	24 volt DC
Current.....	maximum 3,6 A
Force.....	2500 N
Opening angle.....	maximum 90°
Course.....	400 mm
Weight mechanism.....	25,1 kg
Safety.....	an electric final course is delivered separately
Density.....	IP 54

Specific characteristics of the transformer

Entry pressure.....	230 volt AC
Exit pressure.....	24 volt DC
Current (output).....	Max. 5 A
Sizes box (WxLxH).....	180 x 110 x 63 mm
Density.....	IP 54

Specific characteristics of the standard pvc frame

Thermal characteristics.....	U_e^* value 1,50 W/m ² K
Sizes.....	Thickness 3 mm
Impact resistance.....	> 7 kJ/m ²
Hinge side.....	In function of the size and determined by the manufacturer

* U_e value U (edge profile) or insulation value of the frame according to EN 1873:2014+A1:2016 and determined with EN 10077-2:2012

Sizes

Daylight size

- With 1 actuator (M) ▲ from 70 x 70 cm to 100 x 100 cm (hinges on the short side)
- With 2 actuators (M) ▲▲ from 70 x 150 cm to 100 x 280 cm (hinges on the long side)

Free roof access

- With 1 actuator (M) ▲ : width - 20 cm (d)
- With 2 actuators (M) ▲▲ : length - 40 cm (d)
- d x D = nett roof access opening

attestations, certificates and documentation

- see technical files of the separate Skylux® parts

www.mellios.com.gr

SKYLUX
SPINNERIJSTRAAT 100 - B-8530 STASEGEM
T +32 (0)56 20 00 00 - F +32 (0)56 21 95 99
INFO@SKYLUX.BE
WWW.SKYLUX.BE

